

# PURCHASE YOUR PERFECT CAR WITH



# SAHARA MOTORS

# Sahara Motors Dubai :- *About Us*

- **Sahara Motors** is well known for exporting Brand New Cars from Dubai, UAE. Sahara Motors was established in 2011 and our decade-long experience and expertise in handling various export markets and customers have made Sahara Motors the No.1 in the Brand New Car export business from Dubai to the world.
- We are specialists in supplying genuine tax-free brand new Toyota cars like Sedans, SUVs, Pickup Trucks, buses, Van, **customized vehicles** etc. for customers spread across the world.
- **Sahara Motors Dubai**, an **ISO 9001:2015 Certified company**, has been dealing with so many clients and provides transport solutions to meet their needs over a long period of time, which has made it the leader in the New Car export business.
- Our product range extends from low-cost budget vehicles to premium luxury riding options and our association with leading brands ensures that the customer is always endowed with superior quality, value for money, and the best solution for their transporting needs.



Certificate No: 40000186 QM15

ISO 9001:2015



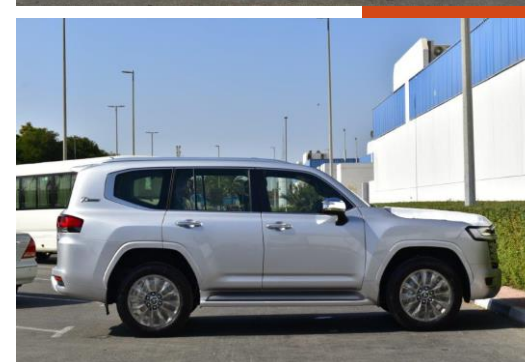
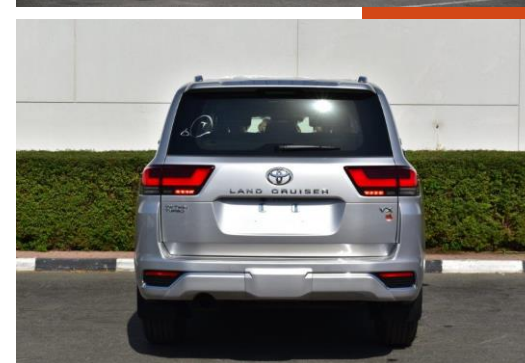
**WE BELIEVE IN BEING RELIABLE**



# **2022 MODEL TOYOTA LAND CRUISER 300 VX V6 3.3L DIESEL TWIN TURBO** **AUTOMATIC TRANSMISSION**

MODEL CODE-FJA300L-GNUVYV  
ENGINE & DISPLACEMENT CC-3346  
DRIVETRAINHP (SAE NET) / RPM- 302  
TORQUE (SAE NET) KGM /RPM-71.4  
ENGINE TYPE-F33A-FTV, V6, DOHC - TWIN TURBO  
FUEL SYSTEM-FUEL INJECTION, EURO 0 (W/O OBD)  
FUEL TYPE-DIESEL  
FUEL TANK CAPACITY LTRS-110(SINGLE)  
TRANSMISSION-10- A/T MULTI MODE  
4WD OPTIONS-FULL TIME  
DIFF. OPTION- TORQUE SENSING CENTRE  
LSD+CENTRE & REAR DIFF LOCK  
TIRE SIZE- 265/55R20  
WHEEL CAP-ALLOY  
STEERING-POWER/TILT WITH/WITH + STEERAGE ACT  
/ WITH (POWER) + TELESCOPIC (POWER)  
BRAKE FRONT/REAR-VENT.DISC/VENT.DISC  
SUSPENSION-FRONT DBL WISHBONE(IND.) / REAR 4  
LINK  
ABS + BA + VSC + ATRC + TSC + HAC + CRAWL + DAC +  
TA  
AIR BAGS-DRIVER + PASSENGER + KNEE (D+P) +  
CURTAIN + SIDE (FR+RR1)  
BUMPER-FRONT & REAR COLOUR KEYED AERO +  
PLATING  
DOOR HANDLES-COLOUR + CHROME  
HIGH MOUNT STOP LAMP  
OUTER MIRRORS-COLOUR KEYED CHROME + TURN  
SIGNAL+POWER + RETRACTABLE (AUTO) + ECM +  
REVERSE LINK  
SIDE STEP-WITH STEP COVER + ILLUMINATION  
REAR BODY SPOILER  
SUN/MOON ROOF  
WINDSHIELD GLASS-GREEN W/TOP BAND + HEAT  
SHIELD + LAMINATED  
ACCESSORY METER-7 "MULTI INFORMATION DISPLAY  
CONSOLE BOX <REAR>- (SYNTHETIC LTHR) WITH

REAR AC VENT/COOL BOX  
DRIVE MODES-3 MODES (NORMAL /ECO/SPORT)  
INNER REAR VIEW MIRROR-ELECTROCHROMIC  
FRONT SEAT-FR. SEAT BELT 3PELRX2 + PT + FL(1)  
HEADREST-2  
POWER SEAT- (DRIVER + PASSENGER)  
VERTICAL SEAT ADJUSTER WITH (DRIVER + PASSENGER:  
POWER)  
REAR SEAT-RR. SEAT BELT-3PELRX5  
HEAD REST-3 (2ND ROW) + 2 (3RD ROW)  
2ND ROW-40:20:40  
3RD ROW-50:50 FLAT FOLDING (MANUAL)  
SEAT MATERIAL-SYNTHETIC LEATHER  
SEATING CAPACITY-7  
STEERING WHEEL-LEATHER + WOOD(TYPE2 GRAY) + CHROME  
+ AUDIO + MID + BT + VOICE + MID+BT+DRCC + LDA  
SUN VISOR-D+P+VANITY MIRROR+BULB(LED)+SLIDE  
AC/HEATER-4 ZONE AUTO  
CRUISE CONTROL-DYNAMIC RADAR CRUISE CONTROL (DRCC)  
ILLUMINATED ENTRY SYSTEM-IGN. SW + ROOM LAMP + FRONT  
& REAR SCUFF PLATE ILLUM + LOUNGE ILLUMINATION  
(FRONT FOOT LAMP + DOOR INSIDE HANDLE)+SIDE STEP  
ILLUM.+WELCOME LIGHTS  
SMART ENTRY (ALL DOORS) + PUSH START+PBD (HIGH)  
POWER ANTENNA-GLASS INTEGRATED  
POWER DOOR LOCK-WITH SPEED LOCK + CRACKUP UNLOCK +  
PASSENGER LOCK S/W  
POWER WINDOW  
RADIO- AM/FM  
STEREO-12.3" DISPLAY AUDIO DECKLESS (W/O NAVI+W/O MAP  
DATA) W/14 JBL SPKS  
WINDOW DEFOGGER  
WIPER FRONT-INTERMITTENT + RAIN SENSOR  
WIPER REAR-INTERMITTENT  
ANTI THEFT SYSTEM-WITH W/SECURITY HORN  
BACK CAMERA- WITH BGM + WASHER  
COMBINATION METER- OPTITRON TYPE



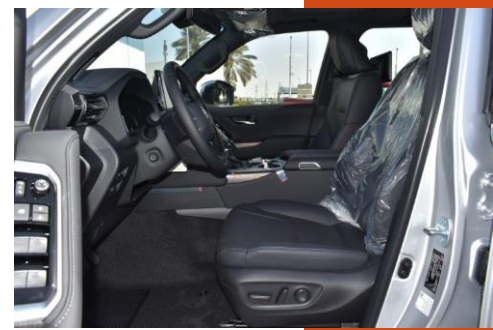
[Continue...](#)

EMBLEM-70TH ANNIVERSARY + TWIN TURBO  
FLOOR MATS-WITH - 70TH EDITION  
FRONT FOG LAMP-WITH - LED  
HEADLAMP CLEANERS  
HEADLAMP LEVELING FUNCTION-DYNAMIC AUTO +  
AUTO HIGH BEAM  
HEADLAMPS-(LOW / HIGH) - LED + LED DRL +  
SEQUENTIAL INDICATORS +AHB--TYPE2 PROJECTOR  
TYPE  
PARKING SENSORS-PARKING SUPPORT  
ALERT/BRAKE(PKSB) (OBJECTS / FR4 + RR4)  
TOWING HITCH  
RADIATOR GRILLE- CHROME + SILVER  
REAR BUMPER STEP GUARD  
REAR ENTERTAINMENT SYSTEM-12.3" : TYPE1 +  
HEADPHONES  
REAR FOG LAMP  
REAR LUGGAGE DOOR- HATCH TYPE : POWER BACK  
DOOR + AUTO/EASY CLOSER DOOR  
REMOTE ENGINE STARTER-WITH (1-WAY)  
ROOF RAIL-FLAT TYPE  
SEAT AIR CONDITIONING-FRONT (DRIVER +  
PASSENGER)  
SPARE WHEEL CARRIER FLOOR W/ LOCK  
FIRE EXTINGUISHER  
GRADE MARK-VX  
PARKING BRAKE-ELECTRIC TYPE+BRAKE HOLD  
REAR COMBINATION LAMP-LED  
WOODGRAIN PACKAGE-WITH(CONSOLE

BOX+STEERING+DOOR TRIM)-TYPE2 GRAY  
TOYOTA SAFETY SENSE- DYNAMIC RADAR CRUISE CONTROL  
(DRCC) + AUTOMATIC HIGH BEAM (AHB) +LAN E DEPARTURE  
ALERT (LDA) + BRAKE + STEERING VIBRATE (VIB) + PARKING  
BRAKE SUPPORT :PKSB(0BJECTS FR4+RR4) + PRE COLLISION  
SAFETY SYSTEM (PCS) + REAR CROSS TRAFFIC ALERT (RCTA)  
DOOR INSIDE HANDLE- PLATING  
INSTRUMENT PANEL-HIGH  
TIRE PRESSURE MONITORING SYSTEM  
USB FAST CHARGER-FR1 + RR1(2) + RR2(2)  
VEHICLE DYNAMIC MANAGEMENT  
WIRELESS CHARGER

#### DIMENSIONS AND WEIGHT

DIMENSIONS LX WX H MM-5015 X 1980 X 1890  
WHEEL BASE MM-2850  
GROUND CLEARANCE MM-235  
MIN. TURNING RADIUS (M)-5.9  
GROSS VEHICLE WEIGHT (KGS)-3230





# **2022 MODEL TOYOTA LAND CRUISER 300 VX-R V6 3.3L TWIN TURBO** **AUTOMATIC TRANSMISSION**

**MODEL CODE – FJA300L - GNUZYV**

## **TECHNICAL FEATURES**

**ENGINE: F33A-FTV, 3.3L, TWIN TURBO**

**OUTPUT(HP/RPM): 302/4000**

**TORQUE(NM/RPM): 700/2600**

**TRANSMISSION: 10 SPEED AUTOMATIC**

**TERRAIN: 4X4**

**TIRE SIZE: 265/55R20**

**FUEL TANK CAPACITY: 110 LTR**

**SEATING CAPACITY: 7**

**FUEL EFFICIENCY(KM/L): 12.5**

**EMISSION STANDARD – EURO IV**

## **INTERIOR FEATURES**

**AIR CONDITION: FOUR-ZONE**

**SEAT MATERIAL: PREMIUM LEATHER**

**WOOD GRAIN PACKAGE: WALNUT**

**STEERING WHEEL: LEATHER**

**OPTITRON METER WITH MULTI-INFORMATION**

**DISPLAY 7" SCREEN**

**POWER SEATS: DRIVER+PASSENGER**

**ELECTRIC PARKING BRAKE WITH BRAKE HOLD**

**REMOTE ENGINE STARTER WITH MOBILE APP**

**REAR ARMREST**

**POWER TILT & TELESCOPIC STEERING COLUMN AND MEMORY**

**VENTILLATED SEATS: FRONT & 2<sup>ND</sup> ROW**

**WIRELESS CHARGER**

**DRIVER MEMORY FUNCTION**

**THIRD ROW POWER SEATS**

**HEAD UP DISPLAY**

**AUDIO&ENTERTAINMENT SYSTEM**

**AUDIO: AM/FM+FM SUB +DAB+ ROOF(TEL+GPS)) 12.3"**

**NAVIGATION**

**NUMBER OF SPEAKERS: 14JBL**

**APPLE CARPLAY & ANDROID AUTO**

**11" REAR SEAT ENTERTAINMENT WITH BLUETOOTH  
CONNECTED HEADPHONES**

## **EXTERIOR FEATURES**

**ALLY WHEELS 20" (265/55R20)**

**SUNROOF**

**ROOF RAIL: INTEGRATED**

**DOOR MIRRORS+POWERED RETRACTABLE: CHROME**

**LED HEADLIGHTS WITH DRLS**

**LED FRONT FOG LAMPS**

**HEADLIGHT LEVELING: AUTO**

**ROOF SPOILER**

**FRONT&REAR BUMPERS: AEROKIT+PLATING**

**POWERED BACK DOOR: WITH KICK SENSOR**

**HEADLIGHT CLEANERS**

## **SAFETY FEATURES**

**ANTI-LOCK BRAKING SYSTEM (ABS), BRAKE ASSIST (BA)**

**DUAL FRONT & KNEE AIRBAGS**

**SIDE & CURTAIN AIRBAGS**

**DIFFERENTIAL LOCK: TORQUE SENSING LSD**

**REAR VIEW CAMERA: PANAROMIC VIEW + WASHER**

**CRAWL CONTROL**

**E-CALL: EMERGENCY CALL SYSTEM**

**3D MULTI TERRAIN MONITOR**

**ADAPTIVE VARIABLE SUSPENSION(AVS)**

## **TOYOTA SAFETY SENSE PACKAGE**

**CRUISE CINTROL: DYNAMIC RADAR CRUISE**

**PARKING SUPPORT BRAKE**

**LANE DEPARTURE ALERT(LDA)+STEERING VIBRATION: LANE**

**TRACE ASSIST**

**AUTO HIGH BEAM: ADAPTIVE HIGH BEAM SYSTEM**

**PRE-COLLISION SYSTEM (PCS)**

**BLIND SPOT MONITOR**

## **DIMENSIONS AND WEIGHT**

**DIMENSIONS (MM): L 5145 X W 1980 X H 1890**

**GROSS WEIGHT(KG):3,230**



# Sahara Motors Dubai :- *What makes us Trusted and Reliable brand new car exporter?*

---

- Sahara Motors, an [ISO 9001-2015 Certified](#) Company
- We are a Verified [Global Trusted E-Network member](#) by Dubai Chamber of Commerce.
- We offer great value for your money and a wide selection of [Toyota Cars](#) at Sahara Motors Dubai.
- **Excellent Customer Service 24 X 7**
- We also do Customization of Vehicles as per requirements of our customers.
- We provide **logistic support** to our customers.
- We can transport vehicles at the most competitive price in any part of the world for our customers.
- We have a professional and experienced team that delivers a delightful experience to its customers when they purchase their dream vehicle from Sahara Motors, Dubai.
- We establish long-term business through our high-end service and partnerships based on respect and transparent deals.

**WE BELIEVE IN BEING RELIABLE**

# Sahara Motors Dubai :- *Contact Us*

**Address:** Sahara Motors, Block 3, Showroom 25, Dubai Auto Market,  
Al Awir, Ras Al Khor, Post Box - 47876, Dubai, U.A.E

**Contact Number:** +971 4 3332623, +971 4 3455924

**Call/WhatsApp:** +971 56 9963661 / +971 56 1144253 / +971 544400938 / +971 569957707

**Fax:** +971 4 3332643

**email:** [info@saharamotorsuae.com](mailto:info@saharamotorsuae.com)

**Website:** [www.saharamotorsuae.com](http://www.saharamotorsuae.com)



**WE BELIEVE IN BEING RELIABLE**